

# INDUSTRIAL TROUBLESHOOTING MONITORING SYSTEM

...

ITMS Pro C1



CE

User Manual

# ITMS Pro C1

## User Manual

---

### Copyright

©2021 Custom Bytes of Ky Inc.  
All rights reserved.

### Trademark

is the registered logo of Custom Bytes of Ky Inc  
The name of this product is a registered trademark of Custom Bytes of Ky Inc.  
Other trademarks mentioned in this manual are the registered trademark of their respective company.

### Restriction

Custom Bytes of Ky Inc shall reserve the copyright of this document.  
No part of this document may be reproduced, distributed or changed, partially or wholly, without formal authorization from Custom Bytes of Ky Inc.

### Disclaimer

Custom Bytes of Ky Inc makes effort to verify the integrity and accuracy of the contents in this document, but no formal guarantee shall be provided. Usage of this document and the subsequent results shall be solely the user's responsibility. Custom Bytes of Ky Inc reserves the right to change the contents of this document without prior notice.

# Contents

---

## 01

### Overview

Important Safety Instructions  
Warning  
Package Contents

## 02

### How to use

How to Power ON/OFF  
Camera Preparation before use  
Connecting to Camera  
Video Operations

## 03

### Troubleshooting

Problems  
Possible Causes or Solutions

## 04

### Product Warranty

Warranty Exclusions

# Overview

---



## Important Safety Instructions

*Read these operating instructions carefully before using and keep it handy for future reference.*

**Follow all the safety instructions listed below.**

1. Do not use this apparatus near water.
2. Clean only with dry cloth.
3. Use the unit in accordance with the manufacturer's instructions.
4. Do not block any ventilation openings.
5. Do not install near any heat sources such as radiators, heat registers, stoves, or other apparatus (including amplifiers) that produce heat.
6. Keep the power cord away from footpath to prevent the plugs and cable from being walked on or pinched.
7. Only use attachments/accessories specified by the manufacturer.
8. Unplug this apparatus from power supply during lightning storms or when unused for long periods of time.
9. Do not attempt to repair or modify the unit. Kindly refer all servicing and repair to qualified service personnel.
10. Do no disassemble.
11. Use only white glove courier service to transport
12. Insure to full value prior to transport.

# Overview

---

## **WARNING**

1. To reduce the risk of fire or electric shock, do not expose the device to rain or moisture.
2. Only use the standard adapter specified in this manual. Using any other adapter could cause fire, electric shock, or damage to the product.
3. Incorrectly connecting to power supply or replacing battery may cause may cause explosion, fire, electric shock, or damage to the product.
4. Do not connect multiple cameras to a single adapter. Overloading the adapter may cause overheating or fire.
5. Install the camera securely and firmly to prevent it from falling as it may cause damage.
6. Do not place conductive objects (e.g. screwdrivers, coins, metal parts, etc.) or containers filled with water on top of the camera to prevent potential fire or electrical hazard.
7. Do not install the unit in humid, dusty or sooty locations to prevent fire or electric shock.
8. If you observe any unusual smell or smoke from the unit, stop using immediately as continuous usage may cause fire or electric shock. In such case, disconnect the product from power source and contact the service center.
9. If this product fails to operate normally, contact the nearest service center. Do not disassemble or modify this product in any way otherwise the product warranty will be void.
10. When cleaning, do not spray water directly onto the product to prevent fire or electric shock.
11. Do not expose the product to direct airflow from an air conditioner.

# Overview

---



## Package Contents

2	x	ITMS Camera
1	x	Portable Suitcase with Computer Interface
2	x	Extra batteries
1	x	Battery charger
2	x	Power packs
2	x	Camera holders
1	x	Wall charger



# How to use

---

## HOW TO POWER ON/OFF

### Open the system

Release front clips and gently open the top latch.



### Power on

Long press the power button to turn on the system. The power button will light up and a short beep will sound to indicate that the system is on and booting up. The display interface will come on and display the default start up sequence. The system will automatically boot to ITMS Software.



If the system shuts down unexpectedly a system check might appear. Simply click restart to continue proper operation.

### Power off

Press and hold the power button for at least 2 seconds. At the first beep release the button and the system will turn off. The 2 second delay is designed to prevent accidental shut down caused by unintentional contact with power button.



### NOTE:

- The battery will charge even when the device is powered off.
- If the battery is low, the system will beep intermittently to alert you to charge it.

# How to use

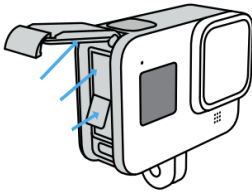
# 02

## CAMERA PREPARATION BEFORE USE

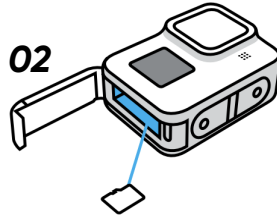
The ITMS Camera has 3 essential parts – camera housing, battery and SD card. Before proceeding to use the camera, kindly ensure you have new fully charged battery.

1. Take camera and open side latch to open the battery compartment.
2. Insert a memory card if it's not already included.
3. Insert the fully charged battery and close the battery cover latch.
4. Press and hold the power button on the camera to turn it on. It takes about 30 seconds for the camera to boot up and pair with the ITMS system.
5. Do not make any changes to the camera settings as the ITMS system will automatically modify the settings.

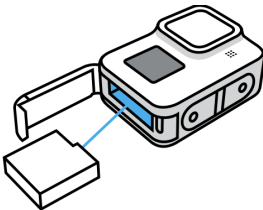
01



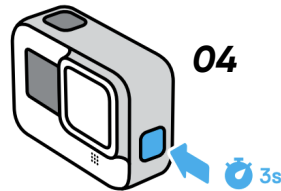
02



03



04



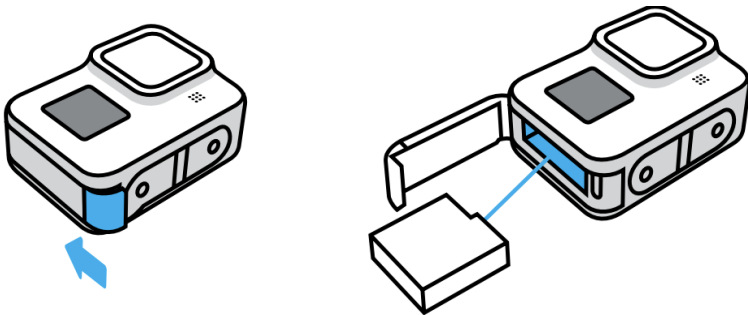
### Attach light add-on

1. To use the light add-on, you need to put the camera into the protective sleeve.
2. Remove the battery latch on the camera.
3. Open the protective enclosure and slide the camera into the enclosure unit, you will hear a click. Then, close the latch on the enclosure.
4. Attach the flashlight by sliding it on to the top position rails. To activate the flashlight press the top button.



## Battery

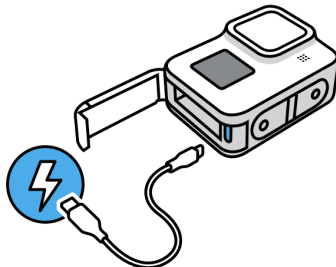
1. For best performance, it is essential to have a fully charged battery in the camera while performing any task.
- To replace the battery inside the camera, open the battery latch of the camera, then remove the old battery.
- Take the new fully charged battery and slide it into the battery compartment. Then close the battery latch.



## Use power adapter

A power bank is included in the package to serve as alternate power source when the device needs to be used for an extended period of time.

1. To use, connect a USB C cable to the power bank. Remove the battery latch and plug the cable into the charging port.
2. If you are using the Add-on adaptor, you have direct access to the charging port at the back of the adaptor.



# How to use

---

# 02

## Attach Arm

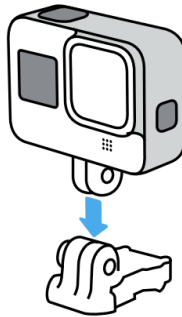
The arm consists of 3 parts – base, neck and joint.

To assemble, slide neck to the base, then slide the joint onto the neck. Remove screw from the joint and align the holes on the joining flops with the camera insert the screw and tighten it securely.

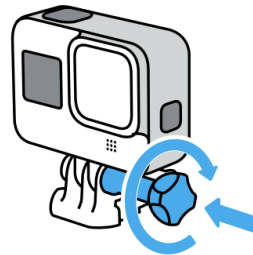
01



02



03

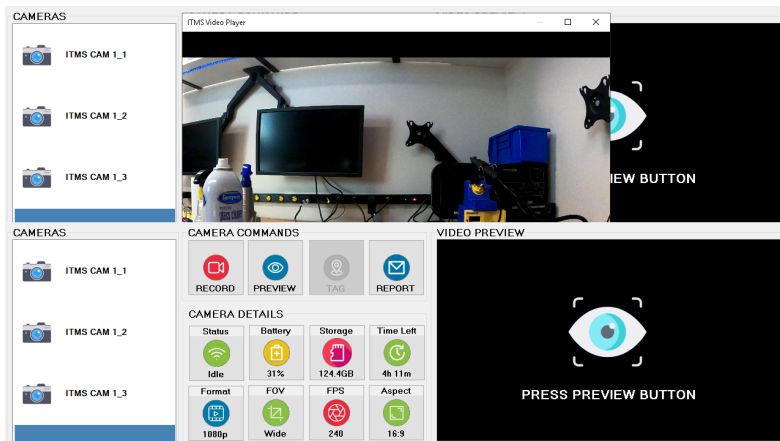


# How to use

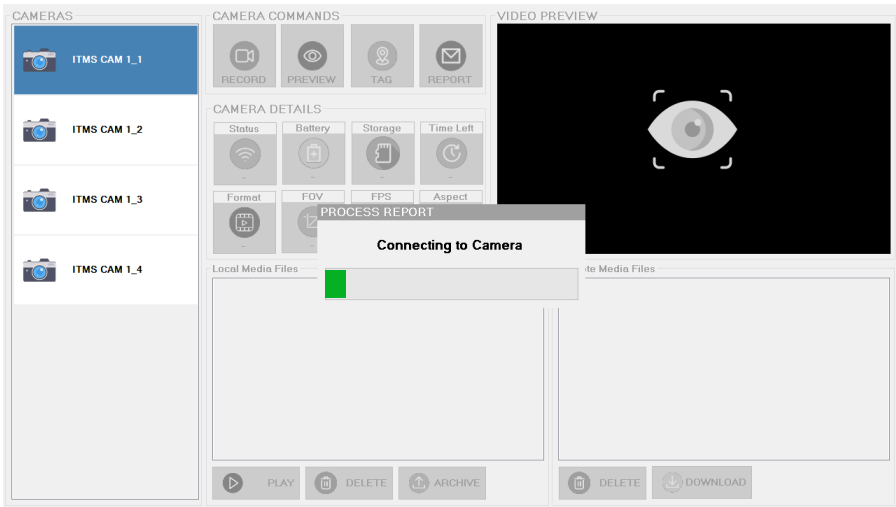
## CONNECTING TO CAMERA

After you turn on the system and prepare the Camera, you are ready to connect it to the ITMS system.

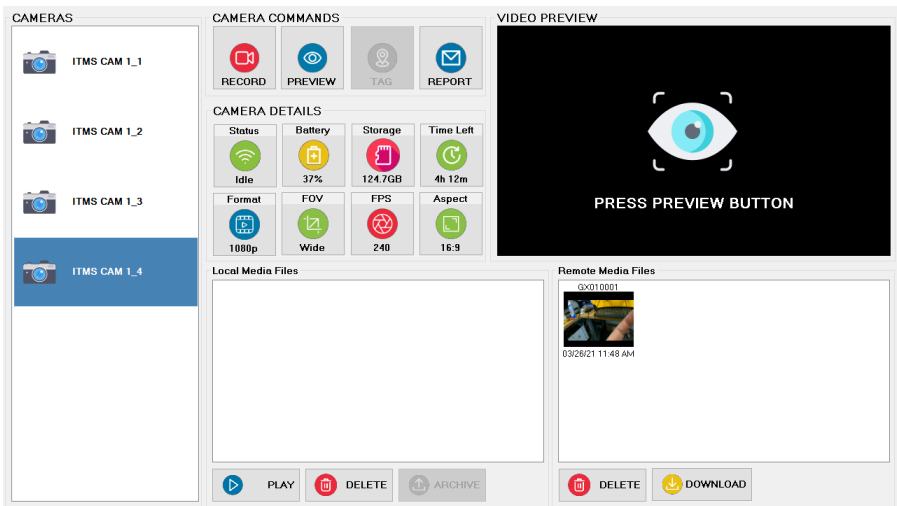
1. On the left side of the system's display interface, the menu '**Camera list**' shows all the cameras paired with the ITMS system. Select the camera you want to connect with by either tapping the touch screen or use the touch pad to select it.
2. The ITMS system will automatically start the connection process. Upon success completion, the camera control icons and status information will be enabled on the system.
3. If you receive connection error message, please try again or check the troubleshooting section.



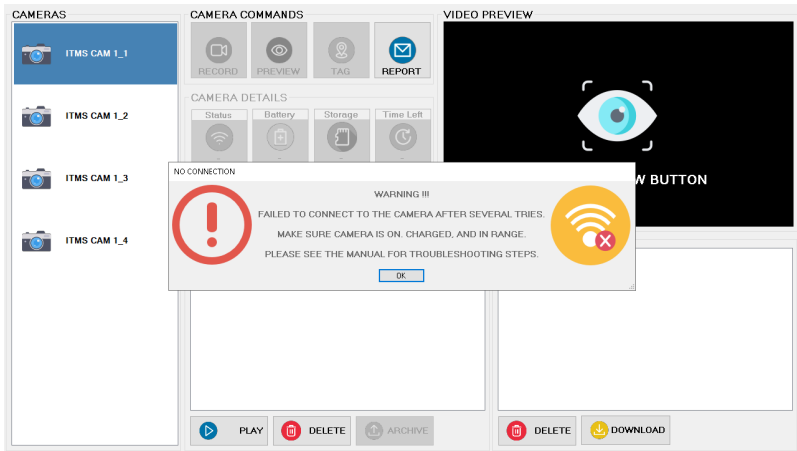
*Select the camera you want to connect*



The ITMS system will automatically start the connection process. Upon success completion, the camera control icons and status information will be enabled on the system.



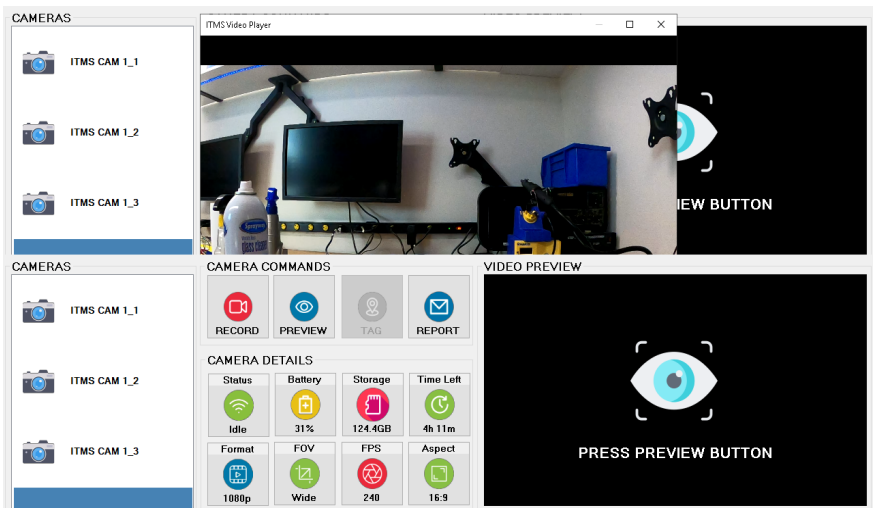
*Camera Connected Successfully*



## Switch between cameras

To control another camera, prepare the camera for use and select it on the Camera list menu on the ITMS system.

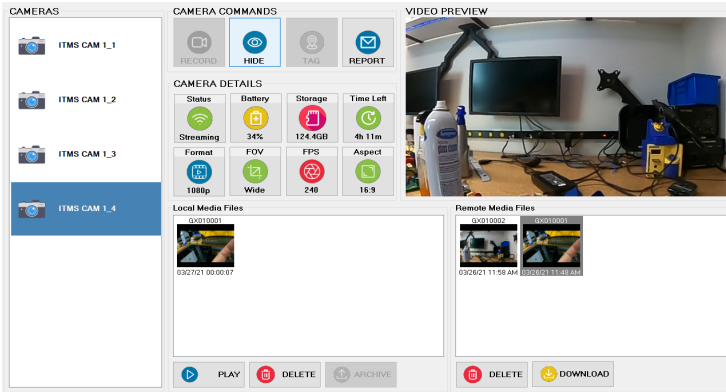
When the new camera is successfully connected, you will see the new camera information, otherwise you will get a connection error screen.



# RECORD VIDEO

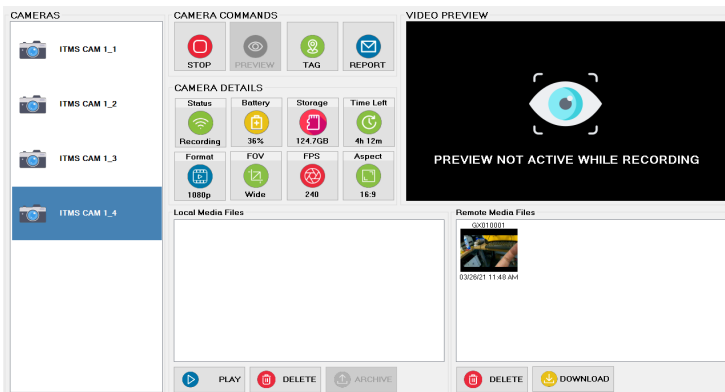
Position the camera on the location you would like to record, you can preview the recording by selecting the preview function in the camera control. After getting your desired view, press the record button and the system will start recording.

The system will record in high-speed frame rate and it will continue recording as long as there is storage space or battery life. You can see the progress and available time on the camera information status window.



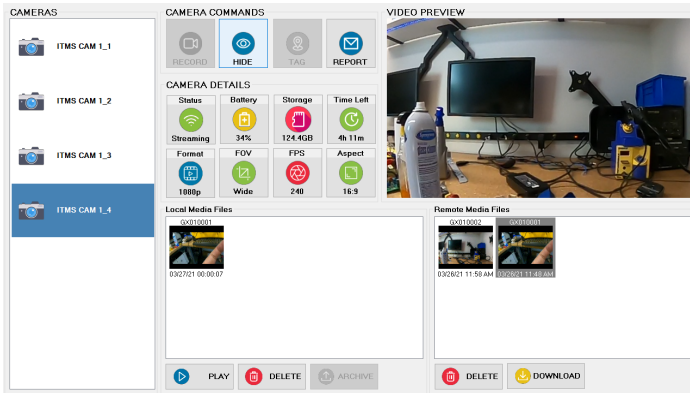
# STOP VIDEO

During recording, the record button changes from 'Record' to 'Stop'. To stop recording on a particular camera, simply press **STOP**.



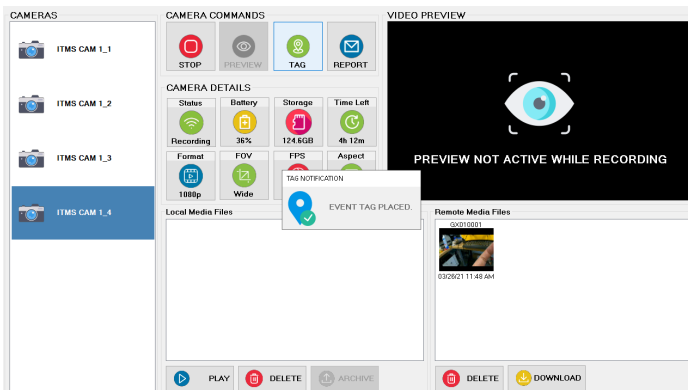
# PREVIEW VIDEO

You can preview the video before recording to properly position the camera. Once the camera is connected to the system, the ITMS will broadcast the preview video on the screen. Then, adjust the camera to your preferred location and start recording.



# TAG VIDEO

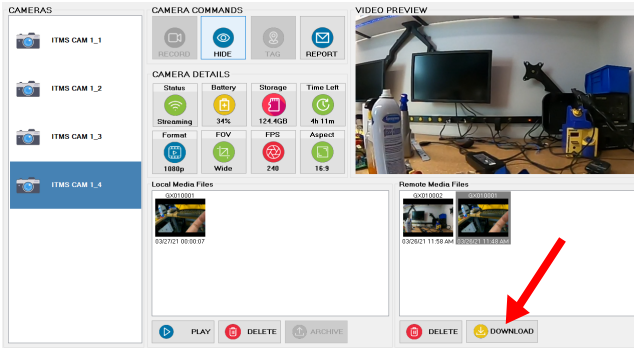
The tag function is designed to bookmark any event that occurs while recording that you would like to flag for faster search. Simply press the TAG button to insert a bookmark in the video for easy navigation during playback. If the tag is successful, you will get a notification.



# DOWNLOAD VIDEO

After the video is recorded, it is stored in the memory card in the camera. To view playback, the video needs to be selected and downloaded to local storage. Once the camera is connected to the system, the list of recorded videos will appear in the remote section. Select the video you want to download, then press the download button.

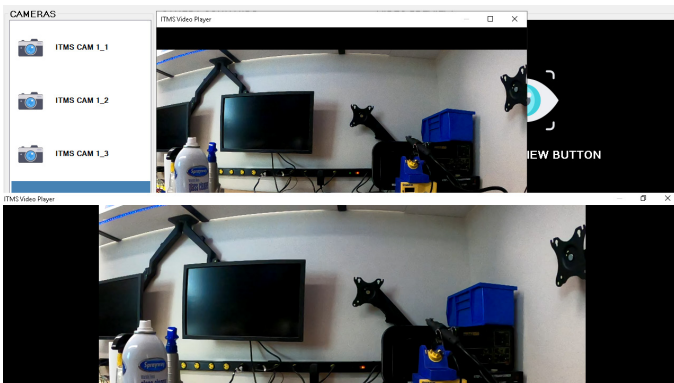
The download progress will be displayed on the ITMS screen. Upon download completion, a copy of the video will be saved to local storage and can be viewed and exported.



# PLAYBACK VIDEO

To playback videos, select the camera from the camera list, then proceed to select your desired video. Either double tap or click the play button to open the video player.

**NOTE:** The camera doesn't have to be connected to the system to view playback. Hence even if there is a connection error, local videos can still be played.





# USING VIDEO PLAYER

## Playback

- After the video has loaded automatically, the play button will be enabled and the available TAG bookmarks will be visible.
- To start the video, press the play button and the video will start playing in full speed. **Tags**

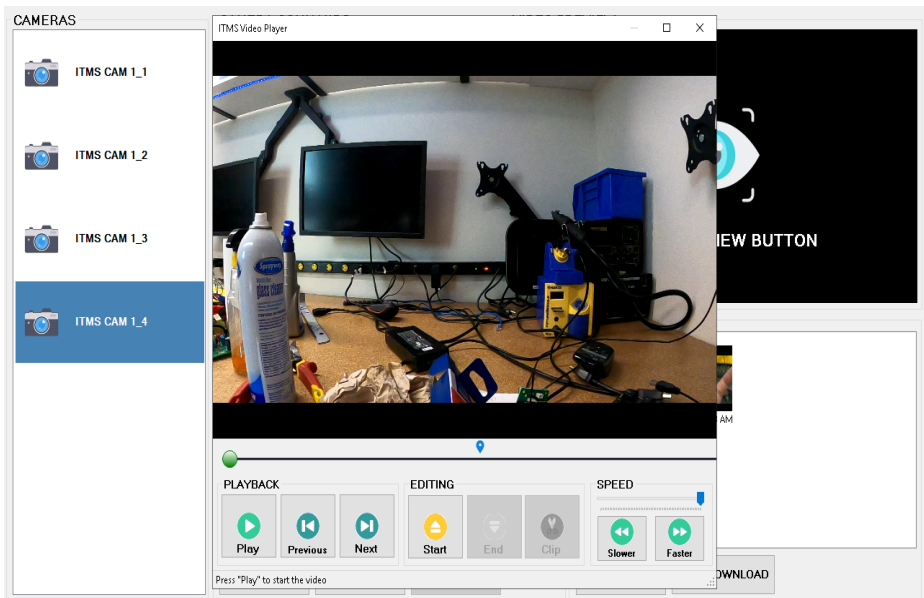
- If you tagged any event during recording, you can move through the tags in the timeline by clicking previous and next buttons.

## Timeline

- To move through the timeline of the video, move the progress bar to your desired portion of the video.

## Speed

- Slow down or accelerate the video speed either by clicking the slow and fast button or adjust the speed selector slider.



## Editing

To edit a portion of the video and save the clip, you need to use the 3 edit icons.

- Locate the beginning of the video you want to edit and press START.
- Locate the end of the edited video and press END. The portion of the video you want edited will appear.
- To cut and save the video, press the CLIP icon.
- ITMS will save the shortened video clip in the camera's folder.

## Full screen

- Double click or double tap the screen during playback to enter full screen mode.
- Repeat the same action to exit full screen mode or press X on the video playback interface.

## Export video

- To export a recorded video or edited clip to a USB drive, select the video you want to save.
- Insert your USB drive into the system.
- Press the archive button to store the selected file onto the USB to be played back using a standalone player which can be found on our website. [Itmsvideo.com](http://Itmsvideo.com)

# Troubleshooting

---

Problem	Possible Cause/Solution
1. The system does not turn on and the indicator light on the power button does not power on.	<ul style="list-style-type: none"><li>- The battery is depleted.</li><li>- Check if the power cable is connected to power source.</li></ul>
2. The system does not start the ITMS software.	The system was shut down improperly, press and hold the power button to restart.
3. Camera won't connect.	<ul style="list-style-type: none"><li>- Make sure new fully charged batteries are in the camera.</li><li>- Reboot the camera by removing and replacing the battery.</li><li>- Wait for 30s and try to connect again.</li></ul>
4. Recording function does not work.	Make sure you have sufficient storage space on the SD card.
5. Playback fails.	Delete the clip and download again from the camera.

# Product Warranty

---

- 1. Equipment Warranty.** The seller, Custom Bytes of KY INC, whatever the case may be ("Custom Bytes"), warrants that the monitoring equipment purchased from Custom Bytes conforms to Custom Bytes' published specifications and is free from defects in materials and workmanship. Unless otherwise provided herein, this warranty covers both the parts and onsite labor necessary to correct any non-conformities or defects with the equipment. For parts necessary to correct any non-conformities or defects, the warranty period extends until the earlier of (i) 365 days after date of installation of equipment.
- 2. Parts Warranty.** Custom Bytes warrants that: (i) non-consumable parts and non-wear spare parts will conform to Custom Bytes' published specifications and be free from defects in workmanship and materials for 365 days from date of shipment.
- 3. Software Warranty.** Custom Bytes warrants that for the earlier of 90 days from installation or 120 days from shipment, its software will perform substantially in accordance with Custom Bytes' published specifications and any accompanying user documentation, if the Software is used under normal operation and maintenance conditions. ANY THIRD PARTY SOFTWARE PROVIDED WITH THE SOFTWARE, AND DATA AND PRE-RELEASE VERSIONS OF THE SOFTWARE, ARE SUPPLIED ON AN "AS IS" BASIS WITHOUT CONDITION OR WARRANTY OF ANY KIND, INCLUDING ANY WARRANTY OF MERCHANTABILITY, FITNESS FOR A PARTICULAR PURPOSE OR NON-INFRINGEMENT, EITHER EXPRESS OR IMPLIED. Any software warranty in any software license agreement between the parties will take precedence over this software warranty.
- 4. Warranty Services.** Should any failure to conform to the warranty appear within the warranty period (or 30 days after shipment for consumable spare parts), Buyer must promptly notify Custom Bytes in writing. Within a reasonable time thereafter and subject to the other provisions herein, Custom Bytes will make the necessary repairs at its expense after confirmation that the non-conforming goods were stored, installed, maintained and used in accordance with Custom Bytes' recommendations, accompanying documentation, published specifications and standard industry practice.
- 5. Failure to Repair.** If Custom Bytes is unable to repair warranted goods after a reasonable number of attempts, Custom Bytes will provide, at its option, (i) new or used replacement goods provided Buyer returns the non-conforming goods; or (ii) a refund of the purchase price depreciated in accordance with standard accounting principles. THIS SECTION 6 CONTAINS BUYER'S EXCLUSIVE REMEDIES AND CUSTOM BYTES' SOLE OBLIGATIONS FOR ANY BREACH OF THIS WARRANTY POLICY. NO OTHER REMEDIES, OBLIGATIONS, LIABILITIES, RIGHTS, OR CLAIMS, WHETHER ARISING IN TORT, NEGLIGENCE, STRICT LIABILITY OR OTHERWISE, ARE AVAILABLE.
- 6. Warranty Exceptions.** Custom Bytes' warranties herein do not cover failure of warranted goods resulting from: (i) accident, abuse, misuse, neglect or any other use not in accordance with Custom Bytes's recommendations, accompanying documentation, published specifications, and standard industry practice; (ii) fire, flood, lightning or any other act of God, Buyer or third party; (iii) Buyer's failure to provide power, air, supplies, storage conditions, or an operating environment that conforms to Custom Bytes' accompanying documentation and published specifications; (iv) failure to follow the maintenance procedures in Custom Bytes' accompanying documentation or published specifications; (v) repair or service by anyone other than Custom Bytes or its authorized representatives; (vi) the warranted goods or any part thereof, including without limitation the ink system and thermal transfer printheads, being used, or coming into contact, with any equipment, parts, supplies or consumables not manufactured, distributed, or approved by Custom Bytes; (vii) any attachments to the warranted goods not manufactured, distributed or approved by Custom Bytes; or (viii) any modifications to the warranted goods not approved by Custom Bytes. This Warranty Policy covers goods owned, leased or otherwise held only by Buyer at all times (and no other third parties), and located only in the United States, Puerto Rico and the Caribbean countries, unless otherwise prohibited by law. Custom Bytes warrants that all services shall be performed in a professional and workmanlike manner in accordance with applicable industry standards for 30 days after performance. For the avoidance of doubt, repeat services on any equipment required to repair any prior or new issues are not covered by this warranty unless such issues arise from previous services provided by Custom Bytes that failed to meet this service warranty. Custom Bytes in its sole but reasonable discretion shall determine whether any of the exceptions herein apply.
- 7. Warranty Disclaimer.** THESE WARRANTIES ARE GIVEN SOLELY TO BUYER AND ARE IN LIEU OF ALL OTHER WARRANTIES, EXPRESSED OR IMPLIED, INCLUDING BUT NOT LIMITED TO THE IMPLIED WARRANTIES OF MERCHANTABILITY, FITNESS FOR A PARTICULAR PURPOSE AND NON- INFRINGEMENT. NO EMPLOYEE OR AGENT OF CUSTOM BYTES, OTHER THAN AN OFFICER OF CUSTOM BYTES, IS AUTHORIZED TO MAKE ANY WARRANTY IN ADDITION TO THE FOREGOING.
- 8. Limitation of Liability.** IN NO EVENT WILL CUSTOM BYTES BE LIABLE FOR ANY INDIRECT, SPECIAL, INCIDENTAL OR CONSEQUENTIAL DAMAGES BASED UPON BREACH OF ANY WARRANTY, BREACH OF CONTRACT, NEGLIGENCE, STRICT TORT, OR ANY OTHER LEGAL THEORY. IN ANY EVENT OF LIABILITY, CUSTOM BYTES' MAXIMUM LIABILITY HEREUNDER WILL NOT EXCEED THE PRICE OF THE GOODS OR SERVICES FURNISHED BY CUSTOM BYTES GIVING RISE TO THE CLAIM.



# ITMS Pro C1 User Manual

